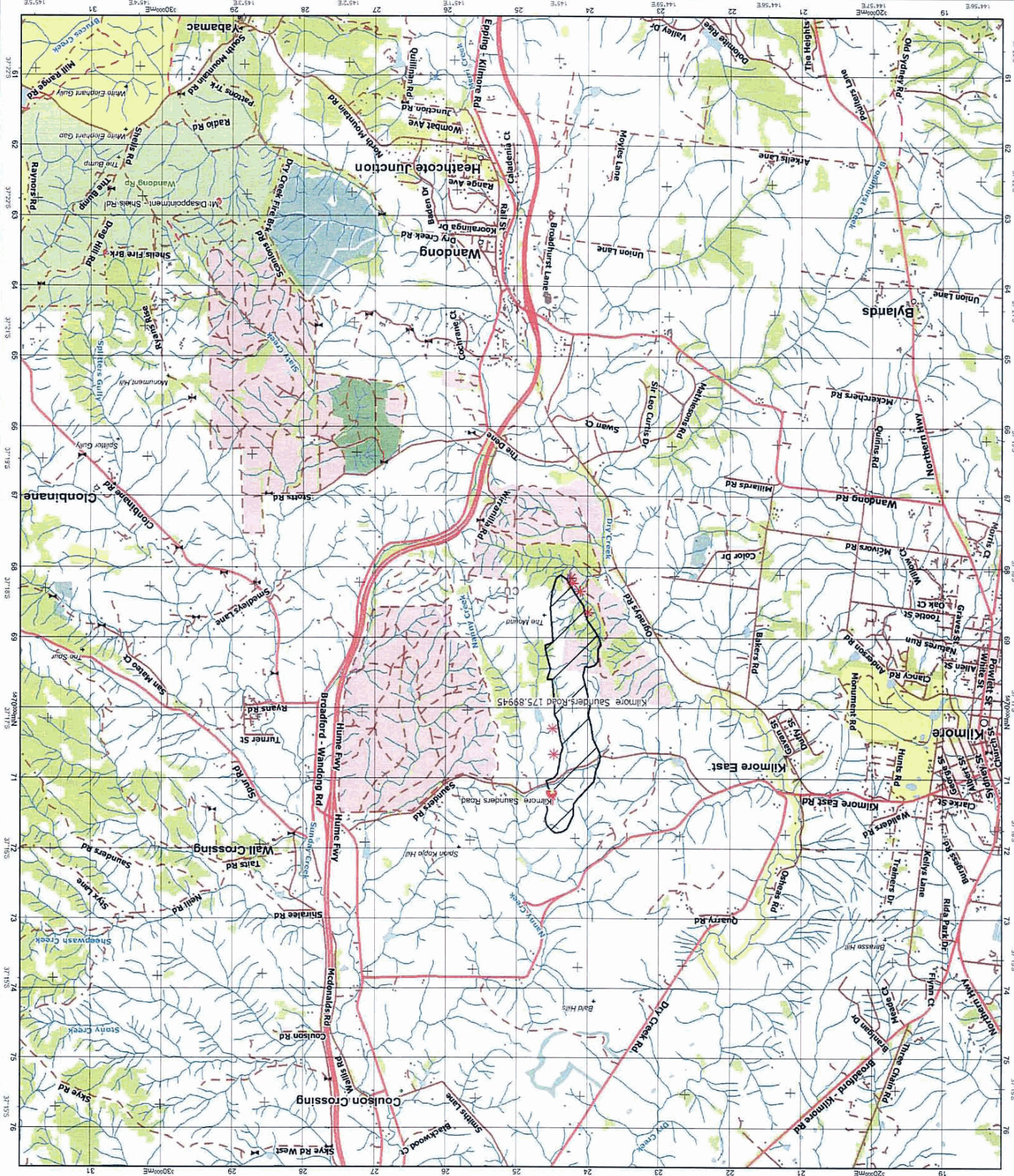


**KILMORE SAUNDERS ROAD A3 Overview Map**

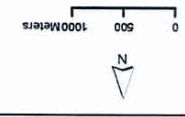
Produced on Sat Feb 07 14:16:09 EST 2009 by Firemap  
 Sustainability and Environment  
 Department of

SUMM.035.002.0129



**Disclaimer:** This map is a snapshot generated from Victorian Government data. The material may be of assistance to you but the State of Victoria does not guarantee that the publication is without flaw of any kind or is wholly appropriate for your particular purposes and therefore declines all liability for any loss or damage which may arise from reliance upon it. All persons accessing this information should make appropriate enquiries to assess the currency of the data. (c) The State of Victoria Department of Sustainability and Environment 2008

	Main Road		Fire History Last 5 yrs
	Local Road ; Foot Tk		Plantation - Soft/Hard
	Closed ; U/maintain. TK		Fire Origin
	2WD TK ; 4WD TK		Fire Contain. ; Control
	Gate ; Bridge		Fire Spread ; Spot Fire
	Transmission Lines		Fire Edge - Going ; Est.
	Buildings ; Built Up Area		Proposed Backburn Line
	Park & Reserve ; Overlay		Completed Backburn Line
	Other Public Land		Completed Backburn Area
	Tree Cover - Ptv. Land		Fire Break (Prop. Cons.)
	Staging ; Base Camp		Sectors ; Divisions
	ICC ; Operations Point		Contingency Line
	Air Strip ; Ret. Air Base		
	Fire Tower ; Helipad		
	Fire Spread ; Escape R.		
	Fire Veh. ; Water Pt		
	Fire Area		
	Predicted Hot Spot		
	Satellite Hot Spot		
	0-12 ; 12-24 ; 24-72hrs		



SV Map Ref:  
 Field Obs:  
 Sat. Hotspots:  
 Linescan: 1239 7/02/2009  
 MGA  
 Map Scale 1:50,000