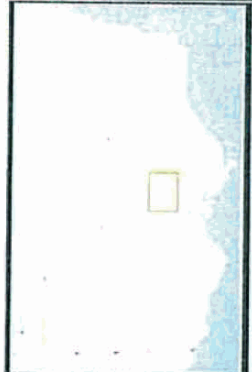
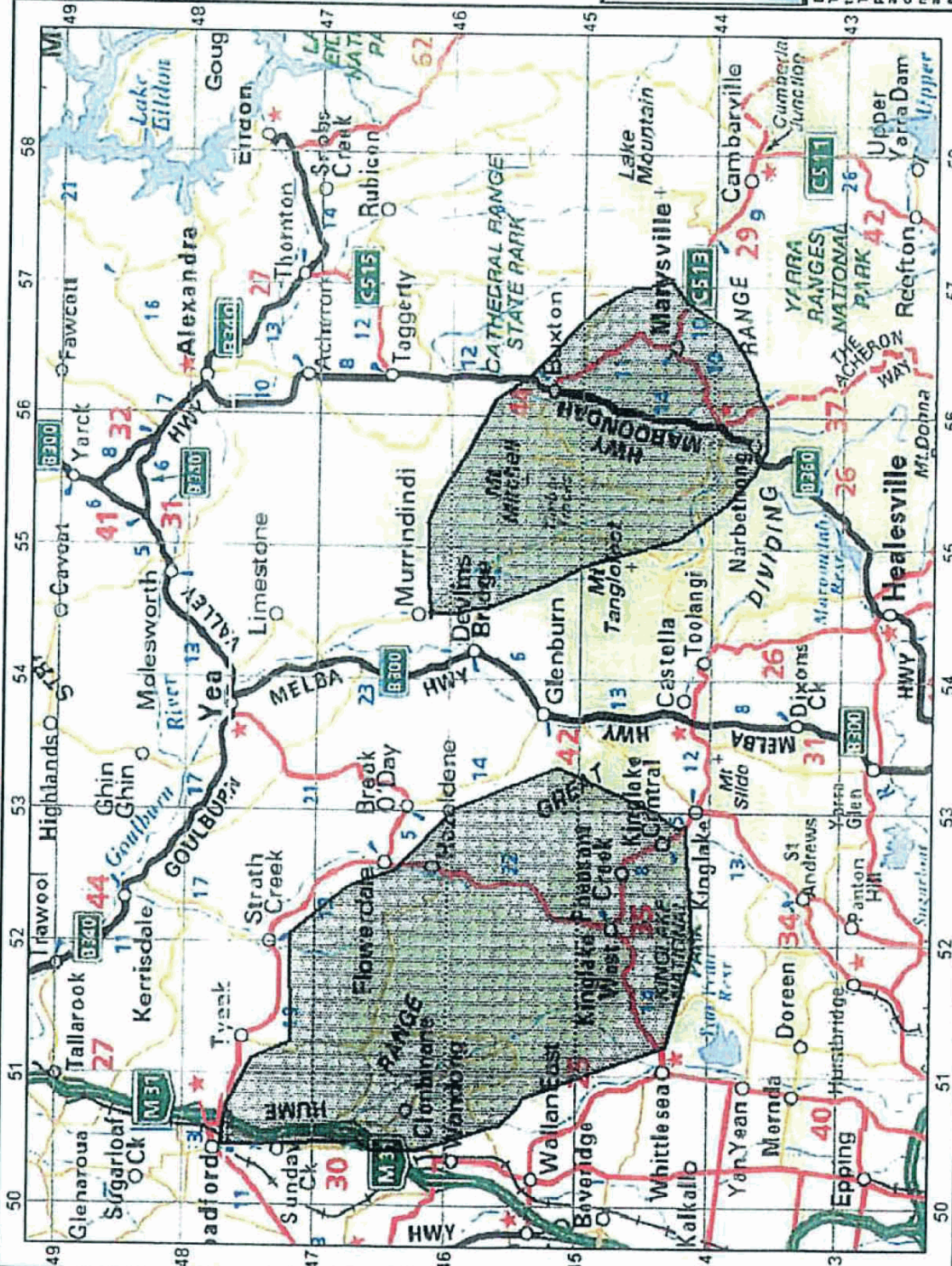


Kilmore East & Murrindindi Fires



Background:
 - Melways State
 Overlays:
 - NSAI/SA
 - Ocean
 Observations:
 - Active Fire Area 2244 HRS 07022009
 - Active Fire Area 2259 HRS 07022009



Disclaimer:
 This map is generated as part of CFA's EMS Mapper trial. It is generated from Victorian Government data. The State of Victoria does not guarantee that the publication is without flaw of any kind or is wholly appropriate for your particular purposes and therefore disclaims all liability for error, loss or damage which may arise from reliance upon it. All persons accessing this information should make appropriate enquiries to assess the currency of the data.

Map Generated by CFA EMS Mapper
 Saturday, 7 February 2009 11:06:08 PM
 Projection: Vic Grid 94
 Centre Loc: Lt -37.3821 Ln 145.4663

