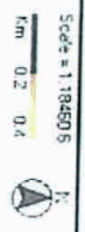
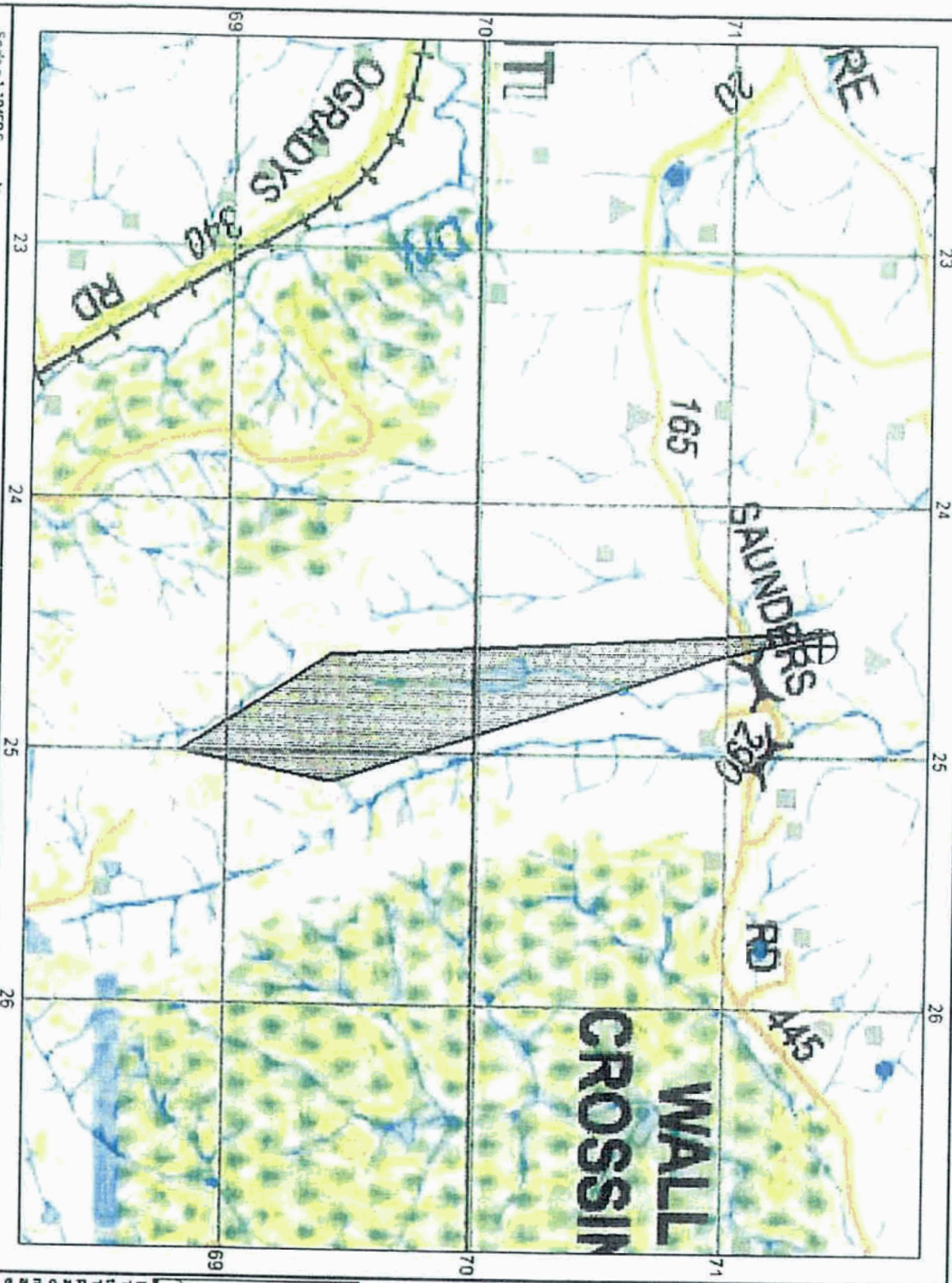


Estimated Fire Location - Kilmore East Area



- Background:**
- S.V. Map Books
- Overlays:**
- NSW / SA
 - Ocean
- Observations:**
- Origin Of Fire 1202 HRS 07022009
 - Point 1231 HRS 07022009
 - Active Fire Area 1248 HRS 07022009



Disclaimer:
 This map is generated as part of CFA's EMAS Mapper tool. It is generated from Victorian Government data. The State of Victoria does not guarantee that the publication is without error of any kind or is wholly appropriate for your particular purposes and therefore disclaims all liability for error, loss or damage which may arise from reliance upon it. All persons accessing this information should make appropriate enquiries to assess the currency of the data.

Map Generated by CFA EMAS Mapper
 Saturday, 7 February 2009 12:45:46 PM
 Projection: MGA, Zone 55
 Centre Loc: U1 -37.3000 Ln 145.0205